

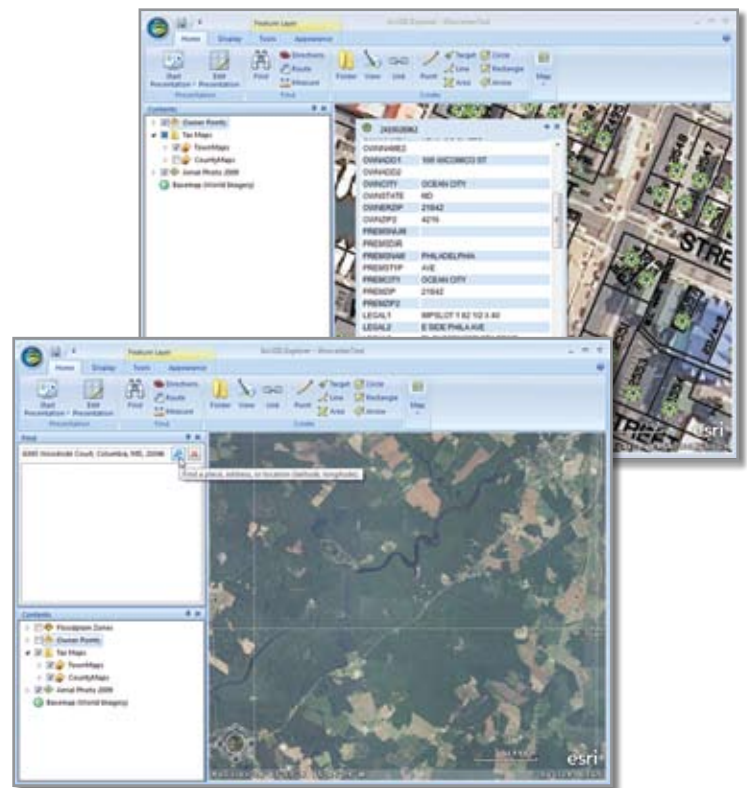
## MdPropertyView

Spatial Systems Associates (SSA) developed the MdPropertyView data for the Maryland Department of Planning and the Maryland Department of Assessments and Taxation in the early 1990's. The product itself was introduced in 1995, and SSA was one of the first organizations given the opportunity to market this data for the State. As a general provider of GIS services to State and Local government organizations, SSA is aware of some of the needs of these and other GIS clients for functionality or additional data that may not be available from the MdPropertyView product as it is delivered from the State. We are constantly assessing our client's needs and striving to provide a product that meets those needs without a requirement to raise the price of MdPropertyView above what the State asks us to charge. Our product now includes:

- ADC page index and Property Map index
- Current property tax maps and assessment data (Administrative and CAMA)
- Monthly sales file update
- The latest Maryland State Highway Administration Grid maps, road centerlines, County road map and County boundaries
- NAIP 2007 and 2009 Imagery
- 1990, 2000, and 2010 Census Tract and Block Group boundaries and data
- Latest ZIP code boundaries
- 2002 Legislative & Congressional District Boundaries
- 1973 & 2002 Land Use/Land Coverage Data
- Latest Priority Funding Areas
- 2002 and 2010 Floodplain data
- Generalized zoning maps
- Protected Lands
- Sewer service areas
- National register of historic properties
- Watershed boundaries
- Residential sales data for 2002-2009

For Esri ArcGIS users, the MdPropertyView dataset is provided with the files necessary to automatically access the data using this technology and to use all of Esri's tools to analyze, manage, import additional data, produce hard copy map products, etc.

In SSA's latest version of MdPropertyView, we are incorporating all of the above along with a free viewer that will not require the user to have purchased or maintain Esri's technology in order to be able to access and make use of the MdPropertyView product. While we continue to believe that use of standard GIS software enhances the usefulness of the data, we also recognize that not all potential users of the product may want or need to purchase, maintain and learn to use traditional GIS technology.



The free viewer will allow the user to pan, zoom, select properties and display assessment data, add symbology, query specific features, perform spatial search, query for a specific address, perform limited analysis, and print a map on a windows compatible device.



The following table outlines the costs associated with the MdPropertyView product for each Maryland county:

<b>Current MdPropertyView Editions—Annual License Fee</b>			
<b>JURISDICTION</b>	<b>1 USER PRICE</b>	<b>JURISDICTION</b>	<b>1 USER PRICE</b>
Allegany	\$395.00	Harford	\$445.00
Anne Arundel	\$595.00	Howard	\$445.00
Baltimore City	\$445.00	Kent	\$295.00
Baltimore County	\$645.00	Montgomery	\$695.00
Calvert	\$395.00	Prince George's	\$695.00
Caroline	\$295.00	Queen Anne's	\$395.00
Carroll	\$445.00	Somerset	\$295.00
Cecil	\$395.00	St. Mary's	\$395.00
Charles	\$395.00	Talbot	\$295.00
Dorchester	\$295.00	Washington	\$395.00
Frederick	\$445.00	Wicomico	\$395.00
Garrett	\$295.00	Worcester	\$395.00
<b>ENTIRE STATE</b>			<b>\$10,180.00</b>

Please contact Spatial Systems Associates with any questions you may have regarding the Maryland PropertyView product or to place an order.

Anna Riggin  
 MdPropertyView sales and support  
 6345 Woodside Court, Suite 201  
 Columbia, Maryland 21046  
 410-423-1870, ext. 103  
 ariggin@spatialsys.com