

SpatialMMS » making tomorrow's facilities SUSTAINABLE today.

TIME & MONEY:

*No one has enough.
Everyone wants more.*

Facility Managers

You need to implement Green initiatives site-wide for your campus environment. Discover the valuable tools SpatialMMS can offer you, and save your agency **time and money**.

Introducing SpatialMMS A Robust FMIS Solution

MONITOR

SpatialMMS provides real time and historical analysis of operating characteristics—**Power Consumption, Water Consumption, Temperature, Humidity, Carbon Dioxide**, etc. and presents the data in an easily understood graphical format.

MANAGE

SpatialMMS manages space utilization; furniture and equipment inventory; HVAC, water, and electrical infrastructure; and site characteristics in one convenient web-based information system.

SAVE

SpatialMMS is a convenient, web-based FMIS that will assist in controlling and reducing operational costs by providing relevant Building Information System (BIM) data, coupled with tools to monitor resource usage, and analytical capabilities provided in an easily understood format. Because it is web-based, you can access the system wherever you have access to the internet.

An Esri web-based Facilities Management Solution

SPATIALMMS
MONITOR MANAGE SAVE



Tools You Can Use

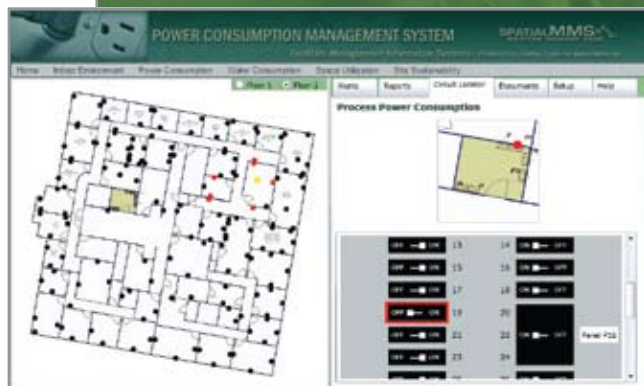
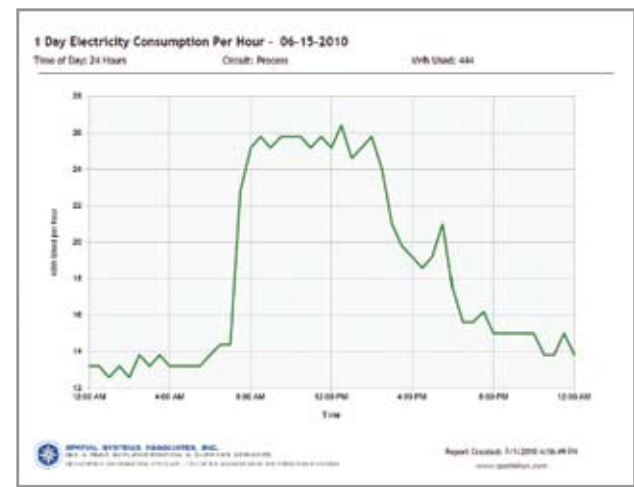
Monitor and Analyze Your Facility

- Indoor environmental data, including temperature, humidity and CO₂ levels
- Power consumption information—the level of monitoring is customer-defined and can be building-wide or down to the individual circuit level.
- Water consumption for a building or for sub-spaces in a building, based on customer requirements
- Track and report space utilization, including tenant and common space assignments, leases, furniture inventory, and equipment inventory.

inventory, parking space inventory, stormwater inlet, piping and outfall characteristics, grade and drainage, impervious surface area, and outdoor lighting.

Report Generation

Report Generation is a significant capability of the SpatialMMS infrastructure management system. Each sensor reports current conditions relevant to that sensor, and the reported data is stored in an SQL-compliant database.



Site Sustainability

View site sustainability characteristics of a facility, including locations of underground utilities, tree

Document Accessibility

SpatialMMS includes the ability to store and access floor plans, as-built drawings, operations manuals, and other documents that are of interest to the building operations personnel. Because the SpatialMMS system is web-based, this feature provides the ability to access building documents from wherever the user is, assuming they have access to the internet.

Compliance with Executive Orders and USGBC Requirements

The analysis and display capabilities related to the Indoor Environment and Power Consumption subsystems allow users to document compliance with Executive Order and USGBC requirements over extended periods of time.

Need More Information?

Contact **Spatial Systems Associates, Inc.**

Larry E. Newman, P.E., LEED AP
410.423.1870, ext. 110
facilities@spatialsys.com
www.spatialsys.com

