



SPATIAL SYSTEMS ASSOCIATES, INC.

GIS & FMIS IMPLEMENTATION & SUPPORT SERVICES

GEOGRAPHIC INFORMATION SYSTEMS

FACILITIES MANAGEMENT
INFORMATION SYSTEMS

6345 Woodside Court, Suite 201
Columbia, MD 21046

www.spatialsys.com

Selected Clients

Charles County, Maryland
City of Charlottesville, Virginia
City of Laurel, Maryland
Fairfax County, Virginia
Government of the District of Columbia
National Institutes of Health
State of Maryland
Town of La Plata, Maryland
U.S. Department of Defense
U.S. Department of Health
and Human Services

Who We Are

Spatial Systems Associates, Inc. (SSA) is a small business located in Columbia, Maryland along the I-95 corridor between Washington, DC and Baltimore, Maryland. Established in 1995, SSA has been providing Geographic Information Systems (GIS) implementation and support services for federal, state, county, municipal, and commercial clients in the mid-Atlantic region, utilizing Environmental Systems Research Institute (Esri) technology since its inception.

Within the last several years, SSA has additionally turned its attention inside the building envelope, and is now providing Facility Management Information Systems (FMIS) implementation and support services to many of these same clients. Utilizing the same fundamental Esri tools, SSA has developed an internet-based FMIS approach that "maps" building interiors and applies space and furniture/equipment inventory and management techniques to the buildings.

In the same system, SSA also monitors energy consumption, water consumption, and indoor environmental quality characteristics (temperature, humidity, light, noise, CO₂ levels, etc.) to provide a system that will capture and report information on a real-time basis to the facility manager. In so doing, our system collects and stores data for analysis or for reporting as part of LEED® certification and commissioning.

Building on the Esri platform, we provide services and support to our clients in the following areas:

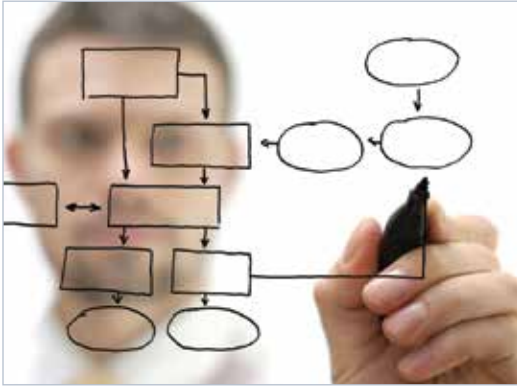
GIS Services

Consulting
Data Acquisition & Development
Software Development
Analysis
Web Hosting
On-Site Support
Map Publications

FMIS Services

Consulting
Data Development
Document Management
Monitoring
LEED Certification
FMIS System Integration
Programming
Hosting
Support

GIS SERVICES



Consulting

- » Enterprise GIS and FMIS
- » Needs Analysis and Cost Benefit Study
- » Quality Assurance/Quality Control (QA/QC)

Develop an understanding of your organization's needs and explore how GIS technology can meet them. Learn about the benefits of using Enterprise GIS or perform a needs analysis to discover the current capacity of your technology.

Data Acquisition & Development

- » Scanning
- » Acquisition/ Processing
- » Field Data Collection
- » Vectorization/ Attribution
- » QA/ QC

Enhance the integrity of your data to meet your organizational standards or national standards. Transfer your existing paper documents into the digital environment for use with GIS and other spatial data.

Software Development

- » Desktop Applications
- » Web Applications
- » Code Conversion

Custom desktop or web applications designed to be integrated with Esri's ArcGIS suite of products. Our applications provide powerful tools with easy to use interfaces in the latest development platforms.

Analysis

Spatial's staff of seasoned GIS professionals can develop your data and perform analysis on an as-needed basis, providing both report and cartographic output for your use.

Web Hosting

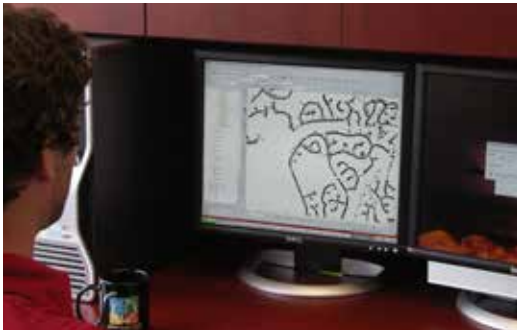
Designing custom web sites with Esri's ArcGIS Server technology to provide your data via the web. We provide a custom look and feel for your site along with added security for data privacy.

On-Site Support

Whether for short term or long term assignments, Spatial staff is available for deployment at your site to assist your staff in the use of GIS technology or to function as your GIS department.

Map Publications

Take advantage of our in-house large format plotting capability or our production volume printing capabilities to produce your display quality graphics or map book publication.



Tools for Facility Management & Sustainability

Consulting

Spatial Systems will provide assistance in identifying your needs for the various FMIS tools that are available and how to best go about implementing and using the technology to better manage your facilities.

Data Development

Spatial Systems will provide all necessary scanning, registration, vectorization, and field investigation services required to build the data that will be included in your FMIS.

- » Indoor Environment
- » Energy Consumption
- » Other Monitoring

Our FMIS systems can be configured to monitor internal environmental factors (temperature, humidity, CO₂), energy consumption, water consumption, and even track mobile furniture or equipment; and we provide tools to automatically analyze and display the results in a convenient dashboard interface.

LEED® Certification

Spatial Systems personnel are LEED accredited to assist you in development and management of the data necessary to certify your facilities and provide continuous commissioning services.

FMIS System Integration

Our solutions are modular and are able to be integrated with legacy databases and applications. There is normally no need to abandon existing systems with which you are comfortable to implement our FMIS.

Programming

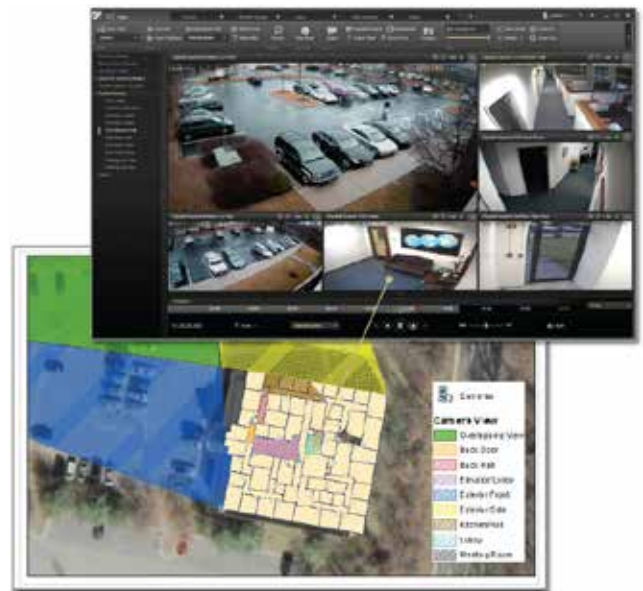
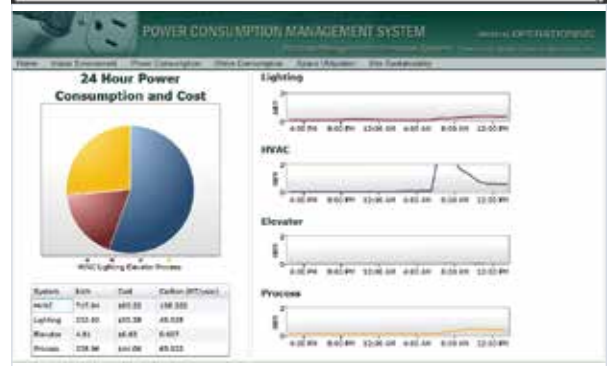
Spatial's programming staff is available to provide the custom interface development, analysis, and integration necessary to meet all of your system requirements.

Hosting

If necessary, Spatial can provide hosting services during the development and implementation process, assuring nearly instant access to data as it is established.

Support

Spatial Systems Associates will be there to assist your staff in the use of our FMIS solutions and, if requested, to provide ongoing data maintenance services.



Our GIS & FMIS Product Solutions

Esri

Spatial Systems is a dealer and developer for the Environmental Systems Research Institute (Esri) line of software products. Esri is the de facto standard for GIS technology.



The SpatialFacilities Suite, along with Esri GIS technology, provides a single, integrated data management, analysis, viewing, and reporting system that glues all of pieces of the facilities management puzzle together. Individual staff, whether management, operations or security, all draw from the same source of information in understanding the facility puzzle pieces for which they are responsible.

SPATIAL PORTFOLIO

SpatialPortfolio focuses on the inventory of facility assets, their location, condition, value, current use and the capital reserve requirements necessary to maintain the portfolio for the foreseeable future. SpatialPortfolio incorporates Capital Project Scheduling, Document Management, and Space Management components into a convenient, web-based and Esri-based interface.

SPATIAL OPERATIONS

SpatialOperations monitors indoor environment (temperature, humidity, CO₂ levels, etc.), energy use, water use, and other operational characteristics to provide actionable information to facility managers that allow the manager to both improve operational conditions and reduce operating costs for a building or group of facilities. SpatialOperations also provides integration with work order scheduling and spare parts inventory systems, allows display of locations of current open work orders, and associates past work orders with GIS features to provide historical information on the maintenance/repair records for building components.

SPATIAL SECURITY

SpatialSecurity integrates a variety of safety and security systems with Esri's GIS technology to provide improved and geographically aware information to security personnel. SpatialSecurity integrates access control, burglar alarm, fire alarm, video surveillance, and other monitoring systems with Esri GIS for a single building, group of buildings, or multiple campuses, as

well as provides a single integrated and spatially aware interface to security personnel.

SpatialLeak

This Leak Detection Application uses Esri's ArcGIS Mobile technology with a GPS-enabled ruggedized tablet—this allows the survey crew to complete their survey process, but removes the need for paper maps to be taken into the field. All of the gas data and associated attribute information is available to the survey crew on the tablet device in the field along with traditional base map information (planimetrics, orthophotography, etc.)

SPATIAL MAP 911

SpatialMap 911 is an advanced address maintenance application for users of Esri's ArcGIS Desktop. Leveraging the powerful ArcObjects application programming interface, automation tools are used to maximize the efficiency of data creation and ensure the data integrity required by 911 centers.

Please check our website for more information about all of our products and solutions.

How to Contract for Our Services

Spatial Systems Associates, Inc. provides its services both on a time-and-materials basis and a firm fixed-price basis, depending on the task and our client's needs.

SSA's services are available to Maryland state agencies and county and local governments, via a Department of Information and Technology Consulting and Technical Services+ (CATS+) contract. Details are available at **www.doit.maryland.gov** by clicking *Procurement & Contracts»Consulting and Technical Services (CATS+)*.

Federal agencies, are invited to use the CIOSP3 contracting vehicle. Virginia state and local government agencies and Washington COG members may prefer to use our Fairfax County IT Services Open Task Order Contract. Non-government clients are invited to discuss their service requirements with us.

SPATIAL SYSTEMS ASSOCIATES, INC.

6345 Woodside Court, Suite 201
Columbia, MD 21046

TEL/FAX: 410-423-1870

TOLL FREE: 1-888-952-1701

WEB: spatialsys.com

