

Church Of The Resurrection, MD

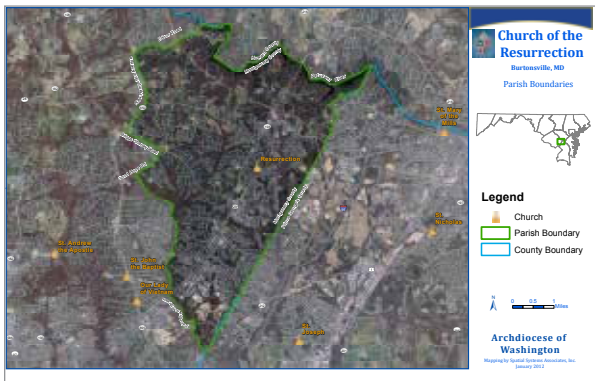
Church of the Resurrection (Resurrection), located in Burtonsville, MD, and part of the Archdiocese of Washington, was officially established in 1981. The parish has undergone significant growth since its establishment, currently serving approximately 1,500 registered families from the surrounding area, including a significant population from a local retirement community. Like many other parishes across the country, Resurrection was trying to determine the best way to understand the changes going on within the local community to become more informed and better prepared for future decisions. Determining where to focus evangelization and financial campaign efforts was one of the key areas where Resurrection needed insight into parishioner trends. Typically, numbers can get lost on a sheet of paper or on a spreadsheet. Resurrection was able to take advantage of the power of Geographic Information System technology (GIS) by visualizing those trends in a map format. In early 2012, Resurrection provided Spatial Systems Associates, Inc. (SSA), a GIS firm based in Columbia, MD, an opportunity to perform mapping analyses for the parish.

At the end of the project, Resurrection received the following map-set :

- Parish boundary location with orthophotography background
- 2000-2010 census population changes
- Locations of where registered parishioners are living
- Median Household Income
- Contribution levels
- Percent of Median Household Income used for Contribution levels

The set of six maps provided great insight into the dynamics of the parish. Each of the maps provided a wealth of knowledge about parishioner trends.

SSA started with obtaining a spreadsheet from the church which included parishioner information, such as addresses, as well as the associated giving-levels for each family. Once we obtained that information, we were able to geocode (the process of giving spatially referenced data a placed location) the families to see the members represented in a computerized mapping format. SSA had previously acquired and processed the 2010 Census and American Community Survey data into a usable mapping format for the mid-Atlantic region. By combining the location of the geocoded parishioners, the contribution levels, and the census and American Community Survey data, we were able to perform a variety of analyses to include in the map content.



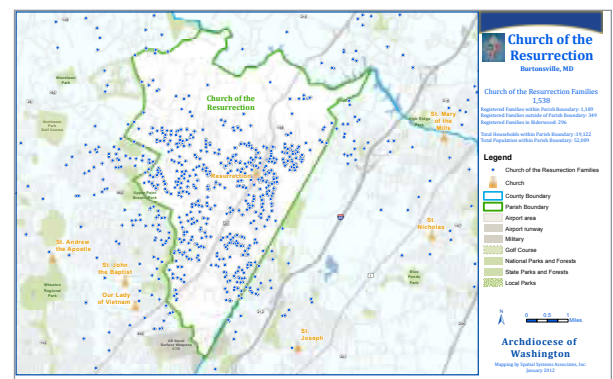
Map 1: Parish Boundaries

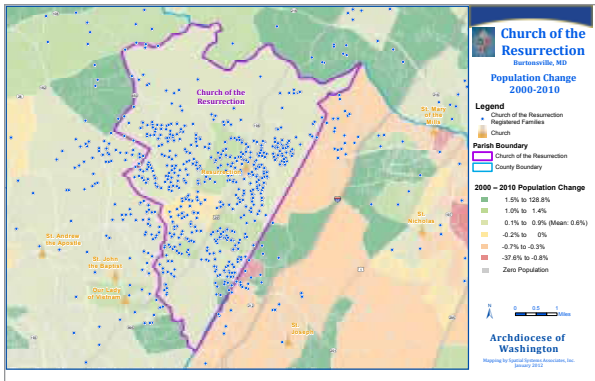
The first map in the set is the parish boundary. We translated the written version of the parish boundaries into a digitized format usable for the map content. We then underlaid the most recent aerial photography below the parish boundaries. Included in this content are the surrounding churches that fall within the extent of the map. This map clearly displays the geographic extent of the parish boundary and the proximity to surrounding churches. Upon closer review, the underlying aerial photography shows the development patterns of the area within and around the parish and the types of land use, such as industrial, residential, and recreational which comprise the parish.

Map 2: Church of the Resurrection Families

The second map in the set displays the location of the registered families. After the geocoding process, the registered families are symbolized as the blue circles. This map provides a look into the clustering and spacing of the registered families, including those that travel into the parish from surrounding parishes. By utilizing census data we were able to include a description of:

- The number of families registered within the Parish Boundary
- The number of registered families living outside of the Parish Boundary
- Total number of Households within the Parish Boundary
- Total Population within the Parish Boundary





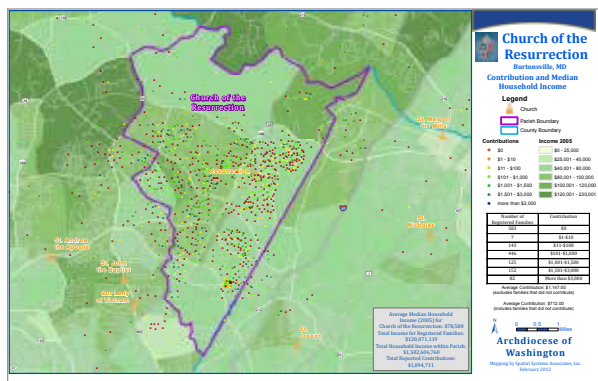
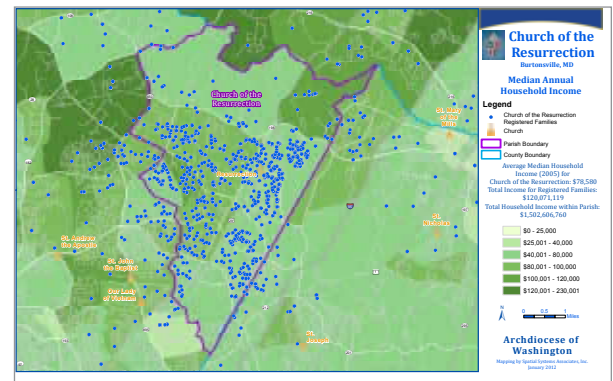
Map 3: Population Change

This map utilizes the 2000-2010 census population change data, thematically displayed underlying the parish boundary and location of registered families. This map provides great insight into population trends throughout the parish and surrounding parishes. Determining where the greatest decrease or increases of populations have occurred may help in deciding where additional parishioner services are necessary, or in some cases where they may no longer be sustainable.

Map 4: Median Household Income

Using the median household income data from the American Community Survey combined with the location of the registered families, we were able to provide some analyses into the financial aspect of the parish. The Median Household Income data was displayed thematically, providing a look into the household income distribution among parishioner locations. By completing some spatial analyses SSA was able to determine the:

- Average median household income for Resurrection
- Total income for registered families
- Total Household Income within the Parish



Map 5: Contribution Levels and Median Household Income

To get a greater insight into the financial aspect of the church, a more in-depth map and analysis was completed.

This is a thematic map showing the distribution of annual contributions among registered parishioners. The result of the analysis shows the breakdown of the number of families giving a certain portion of their income, represented by the different color symbols, based upon which range of giving-level the family contributed. The map includes a table showing the number of families that fall into each of the contribution ranges. By comparing the amount contributed against the background of median household income, determining if any trends existed based on income levels becomes more apparent. In this particular parish, the contribution

level did not seem to hold much correlation with census average median household income. By including some simple calculations were able to determine the average contribution from parishioners.

Map 6: Percentage of Household Income Contributed and Median Household Income

Building upon map 5, we were able to create another thematic map showing the percent of annual household income contributed to the church. This map includes a table displaying the number of registered families based on each range of contribution as a percent of income they fall into. Additional included analysis shows the average percent of income contributed. This map, in conjunction with map 5 provides a great insight into current financial trends, but also reveals what the potential income for the parish could be and where best to focus financial campaign efforts.

