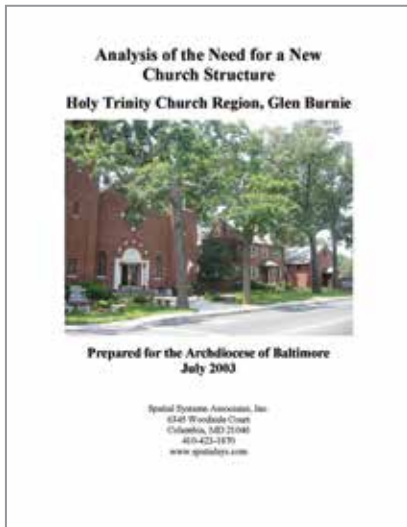
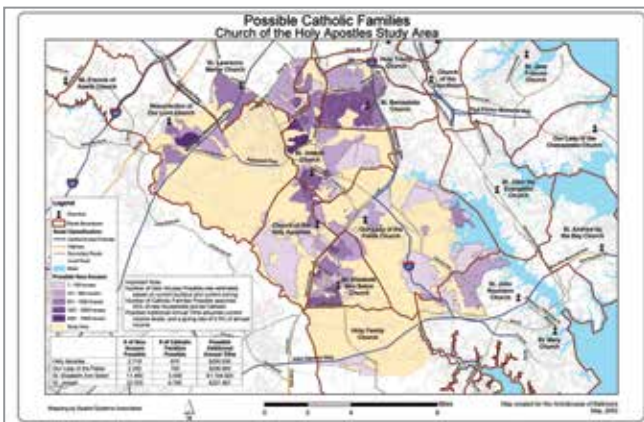
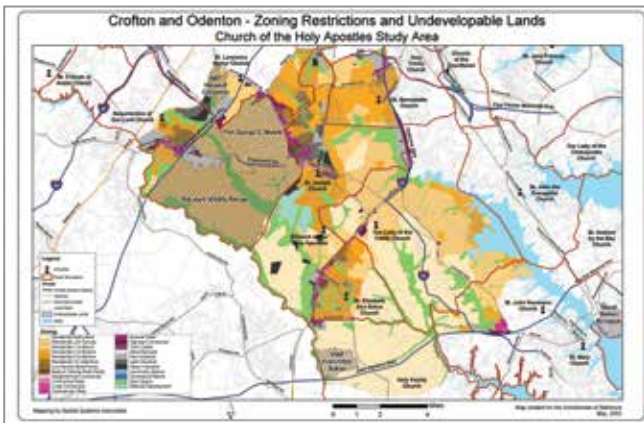


## Analyses

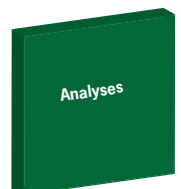


There is an ongoing need for analyses to be performed in small geographic regions to assist a parish or diocese in making decisions. For example:

- » Should an existing parish be allowed to build a new church building?
  - Do local population and demographic trends support the long term viability of the proposed structure?
  - Can the parish's population and income characteristics support the repayment of the monies needed for design and construction?
  - Will proposed development in the region overwhelm the proposed church size in the foreseeable future?
- » Should a parish be allowed/encouraged to build and manage a new parochial primary school; or should proposed renovations to an existing school be approved?
  - Will populations of school aged children in the region support the existence of the proposed school?
  - Will family income characteristics of the region support the proposed tuition rates?
  - Are trends in demographics in the region supportive of the viability of the proposed school?
- » Is there a need for a new secondary parochial school in a region?
  - Where are the existing parochial schools and what is their anticipated excess capacity?
  - Where are other public or private schools, existing or planned, in the region?
  - What is the anticipated population of secondary school students in the region?



Analyses such as these can be accomplished much more easily utilizing computer-based information systems, and the results of the analyses can be more easily understood with map-based graphics. SSA provides these types of analyses and report development on an as-needed and as-requested basis for our customers.

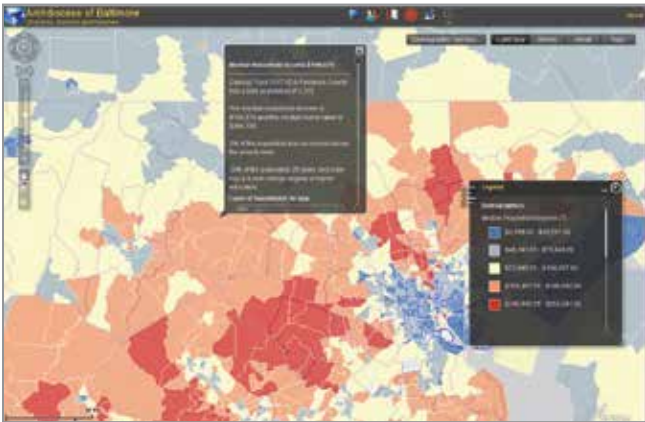


## Web Services



Using the internet to provide information to our congregations has become mainstream over the last few years. Every diocese, and the majority of parishes, currently maintain websites that provide information regarding Mass times, staff contact information, ministry schedules, parish news, calendars of events, etc. Most parishioners rely on the internet to view the most up-to-date information regarding their parish.

As computer technology has become more accessible and user friendly, it is easier for parishes and parishioners to take advantage of free services available via the web. The ability to store information and data in the “cloud” has also created greater flexibility for mapping technology. The ArcGIS Enterprise Server software, by Esri, enables dioceses and schools to create web-based GIS mapping applications.



SSA has the ability to create a web-based mapping interface to provide comprehensive information to a diocese including parish specific details and comparisons. The basic interface has the ability to switch from different basemaps such as aerial photography, topography, street map, etc. to provide the user with different contexts while viewing their data. The interface can also leverage 2010 Census data to provide visualization of demographic information. The legend can be dynamic and can change according to the information displayed on the map. The basic functionality of the interface includes the ability to turn various layers on/off on the map, display a variety of basemaps, find addresses and place names, draw simple graphics on the map display, and perform simple printing. The ability to create bookmarks allows the client to set up predetermined places to quickly locate at a later time.



Tools can be customized to allow for on-demand analysis. Some of these possible analyses include, selecting an area to determine the total number of families within the selected location, the number of families within a parish, and where other families are coming from within a particular parish.

Each of these tools returns a table that can be copied to Microsoft® Excel or Word for further analysis and comparison. These tools can assist in the decision-making process for proposed changes at the diocesan or parish level.

