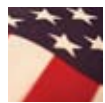




SUSTAINABILITY MATTERS

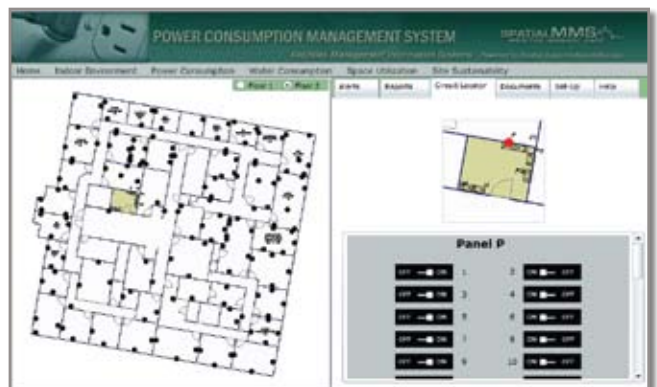
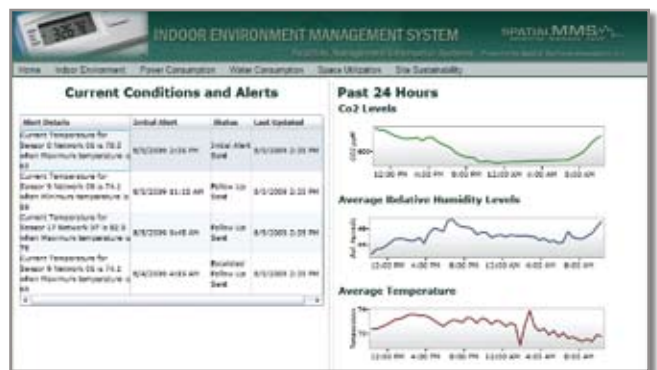
*Building campus-wide information systems to the smallest detail:
 Space Management, Energy Consumption, Water Consumption, Indoor Environment Monitoring*

Recent legislation and executive orders mandate that facility managers build information systems regarding the infrastructure they are responsible for, reduce energy and water consumption, and begin to consider environmental sustainability in the construction and operation of their campuses. Utilizing COTS technology including the ESRI suite of products, Spatial Systems Associates has developed a modular approach to building information systems that meet federal reporting requirements, integrate with standard energy modeling tools, and collect/store data that is necessary to effectively manage and report condition and consumption statistics in an easy to use, web-based and dashboard-structured interface.



BUILDING INFORMATION

- **Space Modeling**
- **Space Management**
 - » Tenants
 - » Utilization
- **Furniture & Equipment Inventory/Valuation & Tracking**
- **Energy Monitoring & Management**
 - » Modeling, Using DOD's *Energy Plus*
 - » Monitoring
 - » Alerts
 - » Analysis
- **Water Monitoring**
 - » Use/Consumption
- **Indoor Environment**
 - » Temperature
 - » Humidity
 - » CO₂ Levels
- **Infrastructure Data**
 - » HV/AC Systems
 - » Electrical Systems
 - » Building Construction Data
- **Work Order Management**
- **LEED Certification/Building EQ**





SITE MANAGEMENT

■ Property Location

- » Regional Land Use: Residential, Underdeveloped
- » Transportation Alternatives

■ Campus Information

- » Locations of Structures
- » Building Size/Occupant Capacity
- » Parking Availability
- » Impervious Surfaces
 - » » Parking, Sidewalks, Buildings
- » Utility Locations
 - » » Water, Sewer, Storm Sewer, Gas, Electric
 - » » Steam, Oil Tanks & Piping
- » Solid Waste Management
- » Forestry/Tree Inventory
- » Number of Parking Spaces/Handicap Parking
- » Handicap Accessibility Compliance
- » Egress, Evacuation Routes/Capacity



Who We Are

Spatial Systems Associates Inc. (SSA) is a full service Geographic Information Systems (GIS) and Facilities Management Information Systems (FMIS) implementation and support provider based in Columbia, Maryland along the I-95 corridor between Washington, D.C. and Baltimore, Maryland. The principals of SSA have been implementing these technologies since 1987; our staff has expertise in all of the required related disciplines. Clients have included federal, state, county, municipal, and private sector organizations throughout the mid-Atlantic region.

SSA is an authorized ESRI developer and reseller. ESRI is the world's leading GIS software provider. Their products are the *de facto* industry standard. Building on the ESRI platform, we provide services and support to our clients in the following areas:

- LEED Analysis and Consulting
- LEED Certification Assistance
- Building Commissioning Services
- GIS and FMIS Consulting
- Website Development and Deployment
- Application Development
- Data Services
- Analysis and Cartographic Production
- Training

For More Information

PLEASE CONTACT

Spatial Systems Associates, Inc.
 6345 Woodside Court
 Suite 201
 Columbia, MD 21046

EMAIL:
facilities@spatialsys.com

T: 410-423-1870
 F: 410-423-1871

