

If You Have Access to the Internet

SSA, INC.



you have access to your DATA
no matter where you are.

SPATIAL SYSTEMS ASSOCIATES, INC. GIS IMPLEMENTATION SERVICES

Computer and communications technology has evolved tremendously over the last 20 years. In some localities, there are more cell phones and PDA's today than there are people! The internet has made access to vast amounts of information fast and convenient nearly free of charge. While for the consumer this has provided an ability to shop online for just about anything, and for the general public it has provided a forum for communication (email, messaging, website browsing, voice over IP, etc), for industry and government it offers a mechanism to provide better services and access to information without the need for intervention by paid staff.

Geographic Information System (GIS) and Facility Management (FM) data and applications offered via the internet are now commonplace. In addition, use of the internet for communication and delivery of workproduct allows service providers to interface quickly with their clients without significant communication costs. Spatial Systems Associates, Inc. (SSA); a GIS/FM implementation and support organization based outside of Washington, DC has

been offering web-based access to GIS/FM data for approximately ten years. SSA not only implements and supports web-based GIS functionality tailored to the needs of our clients, we utilize the technology on a daily basis in our conversion and custom programming workflow to communicate with our clients, to deliver workproduct, and potentially to host data for those clients who choose not to maintain the hardware, software and personnel infrastructure to offer hosting themselves.

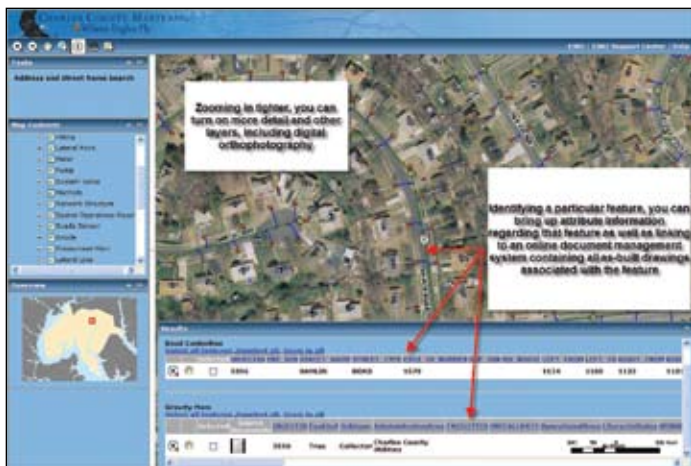
Our custom internet-based solutions, hosted at your facility or ours, provide:

- A forum for communication between our production staff and our customers
- Ongoing access to workproduct — scanned images of as-built drawings linked to the features on those drawings that have been vectorized for use in the GIS/FM environment
- A mechanism for our clients to monitor and review the data throughout the course of the project
- Access to vector, attribute and image data for your constituents — whether they are your own employees or the citizens to whom you provide services
- A mechanism to deploy GIS/FM functionality with minimal investment in hardware, software or computer operations personnel



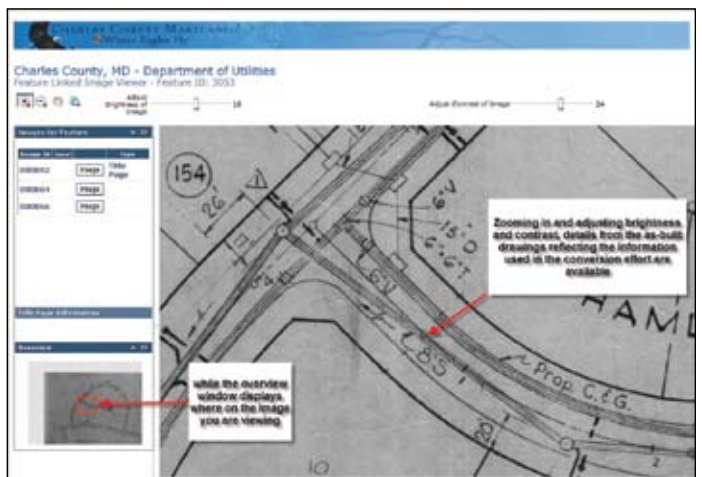


Maximize the value of your investment in GIS/FM by funding data development/maintenance and application design/deployment rather than purchasing hardware and workstation-based software licenses for users that need only minimal analytical functionality; while preserving your options to provide that functionality to power users who have access to the same web-based data systems.



Provide to your field staff access to the same data and applications that are used in the office environment. If they have access to the internet in the field, they can have ac-

cess to an entire as-built drawing inventory linked to constantly maintained GIS data.



SSA will provide as little or as much support in the deployment of the web-based system as you desire, including:

- Design of the graphic interface to be deployed
- Scanning of existing documents
- Vectorization of infrastructure data
- Field investigation/verification of data as required
- Linking of scanned images to vector datasets
- Development of custom applications for deployment over the web
- Maintenance of data
- Hosting of your data on our servers

Please contact Larry Newman at Spatial Systems if you would like to investigate the use of internet technology coupled with GIS functionality as all or a part of your GIS implementation plans.

Spatial Systems Associates, Inc.
6345 Woodside Court, Suite 201
Columbia, Maryland USA 21046
401-423-1870
facilities@spatialsys.com